

# HALF PIPE ENCLOSURE

## 700/1000 mm

ONLY FITS  
NOKIA EQUIPMENT

### THE HALF PIPE ENCLOSURE

is a mounting system used when you want to conceal a small cell site, foliate the radome to make the site blend in to the surroundings. It is possible to mount on almost any structure such as walls, traffic lights, flag poles etc.

### FLEXIBILITY

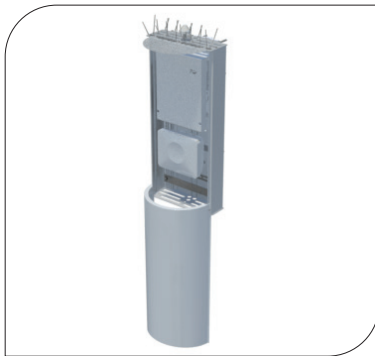
The Half Pipe Enclosure is the perfect installation base for Nokia Flexi Lite BTS, Nokia Flexi Zone outdoor Micro & Pico BTS, Nokia Nano BBU, Nokia Harmony Lite and many other Nokia solutions.

### QUALITY

All components are made of anodized aluminium and acid proof stainless steel which gives the enclosure excellent corrosion resistance. The plastic radome is made by UV-stabilized ABS plastic.

### EASY ASSEMBLY

Installation is done on the ground, the entire enclosure is then lifted in place for easy installation.



## ORDER AND TECHNICAL INFORMATION

DRAWING NO: CD 990952-70 / CD 990952-100

FUNCTION DESCRIPTION: A mounting system used to conceal a small cell site on almost any structure such as walls, traffic lights, flag poles etc.

MOUNTING SPAN:	TUBES	SQUARE PROFILES	90° ANGLE	60° ANGLE
Minimum	Ø25 (1,0 in)	35 x 35 (1,4 x 1,4 in)	35 x 35 (1,4 x 1,4 in)	40 mm (1,6 in) opening
Maximum	Ø120 (4,7 in)	90 x 90 (3,5 x 3,5 in)	90 x 90 (3,5 x 3,5 in)	100 mm (4,0 in) opening

PACKAGE DIMENSIONS	LENGTH	WIDTH	HEIGHT	WEIGHT
Half Pipe Enclosure 700 mm	700 mm (27,5 in)	460 mm (18,1 in)	360 mm (14,2 in)	13 kg (28,5 lb)
Half Pipe Enclosure 1000 mm	1000 mm (39,4 in)	460 mm (18,1 in)	360 mm (14,2 in)	16 kg (35 lb)